



From Design to Installation, FP Diesel® Components Bring Proven Technologies to Every Commercial Engine.

This commitment to leading-edge technology is evident in every single FP Diesel® engine and sealing component, where having the right replacement part means more than simply matching the product's dimensional characteristics.

FP Diesel develops and tests each new engine repair solution through Federal-Mogul Motorparts' global network of research facilities, in many cases improving on original materials and designs to address the real-world challenges encountered in rebuilding engines.

With FP Diesel, you're getting a better solution in the form of trusted technologies engineered to address the unique demands and operating environments of each engine.



Europe/Middle East/Africa:

Federal-Mogul Global
Aftermarket EMEA
Prins Boudewijnlaan, 5
2550 Kontich – Belgium

Rely on FP Diesel for the most complete range of replacement components for hard-working engines!

Please send all your inquiries to fpdiesel.emea@FMmotorparts.com



PRMFP1707-EN



TRUSTED TECHNOLOGY

Engineered to thrive in demanding work environments.





AGRICULTURE Nothing works harder than agricultural equipment. So when you need to service an agricultural engine used in the field, install equally hardworking components: FP Diesel.

INDUSTRIAL Maximizing your equipment investment means finding the best replacement components. That's why over the road and commercial fleets choose FP Diesel engine components.

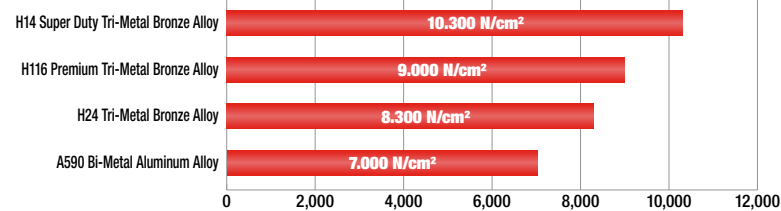
MARINE From workboat applications to onboard generator sets and pumps, FP Diesel engine components are ideally suited to extended life in the marine environment.

OFF HIGHWAY FP Diesel parts are precision-engineered to meet the most demanding specifications. They're designed and tested to withstand brutal operating environments. And they're proven to perform no matter where they go.

BEARINGS

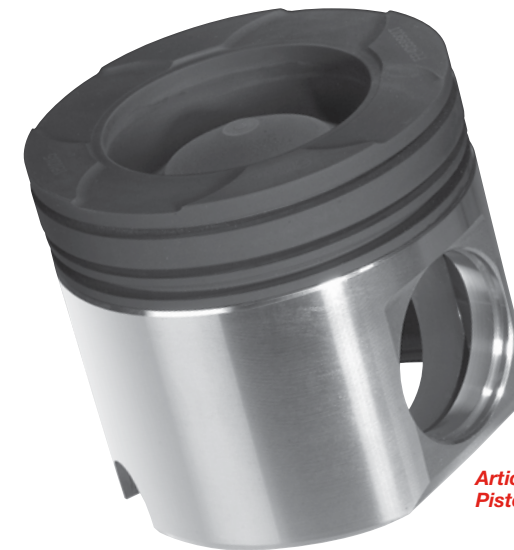
Rebuilders can trust FP Diesel engine bearings to ensure performance and longevity of their engines. Advanced technologies, suited to specific performance characteristics and incorporating OE equivalent or better metallurgies and design, are matched to address specific performance requirements. Bearing materials vary widely in terms of rate of wear and fatigue strength, which is crucial in engines operating under high loads and considerable heat. Federal-Mogul Motorparts has performed the research necessary to identify the right solution for each engine.

Max Peak Load (N/cm²)



FP DIESEL® PISTONS

FP Diesel pistons are proven to be a better and more efficient replacement piston in today's hardest working engines. FP Diesel Articulated and POWERFORGED® pistons feature advanced engineering innovations that vastly improves cooling by circulating fresh oil non-stop to the piston crown; proprietary high-strength materials, and exclusive manganese coatings that improve performance and reduce scuffing.



Articulated
Pistons



POWERFORGED®
Pistons

IN-FRAME AND OVERHAUL KITS

FP Diesel engine kits make it simple to extend an engine's life. Whether you are performing a complete overhaul or an in-frame repair, FP Diesel allows you to select a kit tailored to the job at hand. Overhaul kits give you every component, each precision-engineered and precision-matched for the job. This comprehensive program also provides concise application information, a full range of bearing oversizes and undersizes, and complete overhaul kits that include full gasket sets. Plus FP Diesel quality throughout.



IN-FRAME KIT Typical In-Frame Kit includes:

- Pistons
- Rings
- Pins and Retainers
- Cylinder Liners and O-Rings
- Connecting Rod Bearings
- Main Bearings
- Head Gasket Set
- Oil Pan Gasket Set

OVERHAUL KIT Typical Overhaul Kit includes:

- Pistons
- Rings
- Pins and Retainers
- Cylinder Liner and O-Rings
- Connecting Rod Bearings
- Main Bearings
- Head Gasket Set
- Lower Gasket Set
- Front and Rear Crankshaft Seals

ML7™ HEAD GASKETS

The FP Diesel ML7™ gasket's innovative multi-layer-core design enables it to withstand significantly higher combustion pressures and temperatures, and to accommodate vertical and lateral motion between the block and cylinder head. The seven-layer technology incorporates a steel core, ensuring optimal compressed thickness control and a more solid and durable gasket that eliminates the concerns of repeat sealing issues in high-output applications.

7-LAYER TECHNOLOGY

